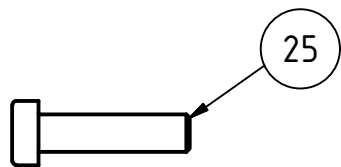
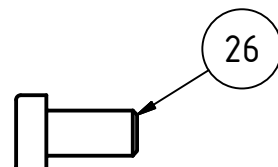


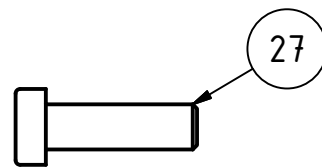
Din-Teile(2)



4x M5x20mm
Zylinderkopfschraube



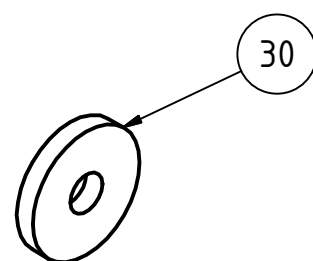
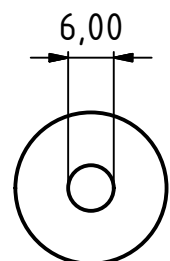
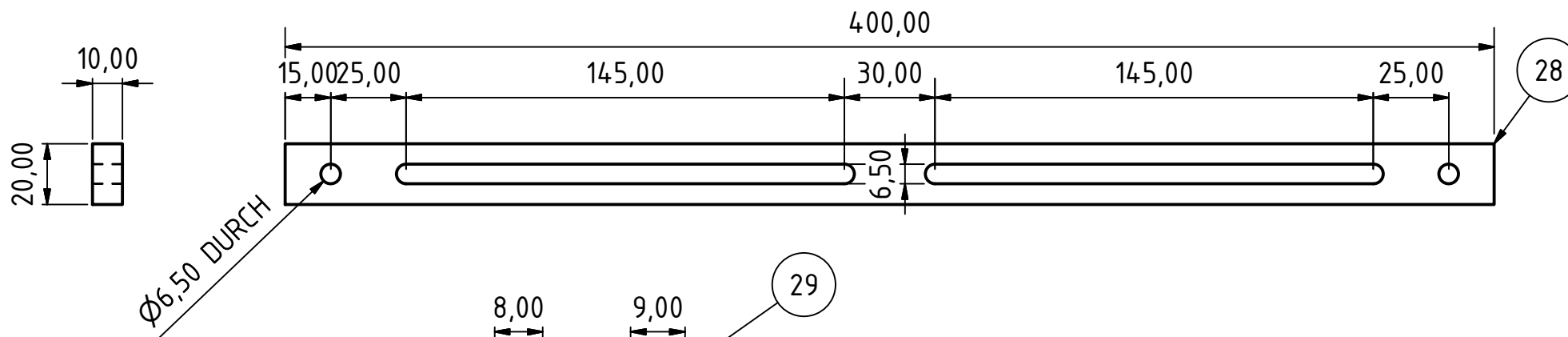
28x M6x12mm
Zylinderkopfschraube
(4mm Inbus)



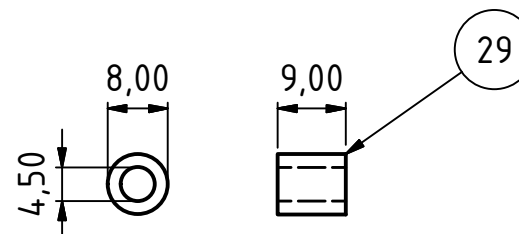
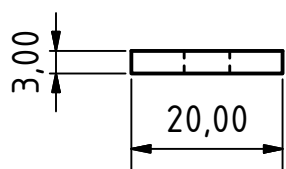
4x M6x20mm
Zylinderkopfschraube

Selbstbauteile(1)

2x Alutraverse (hier wird
später das Chassis befestigt)



4x Filzring
selbstklebend



8x Abstandshülse
Alu oder Messing

				Datum		Name	
				Gezeichnet 02.06.2017		Wehner H.	
				Kontrolliert			
				Norm			
						Reparaturständer V2.2	
						Reparaturständer	
						4	
						A3	
Status	Änderungen	Datum	Name				